

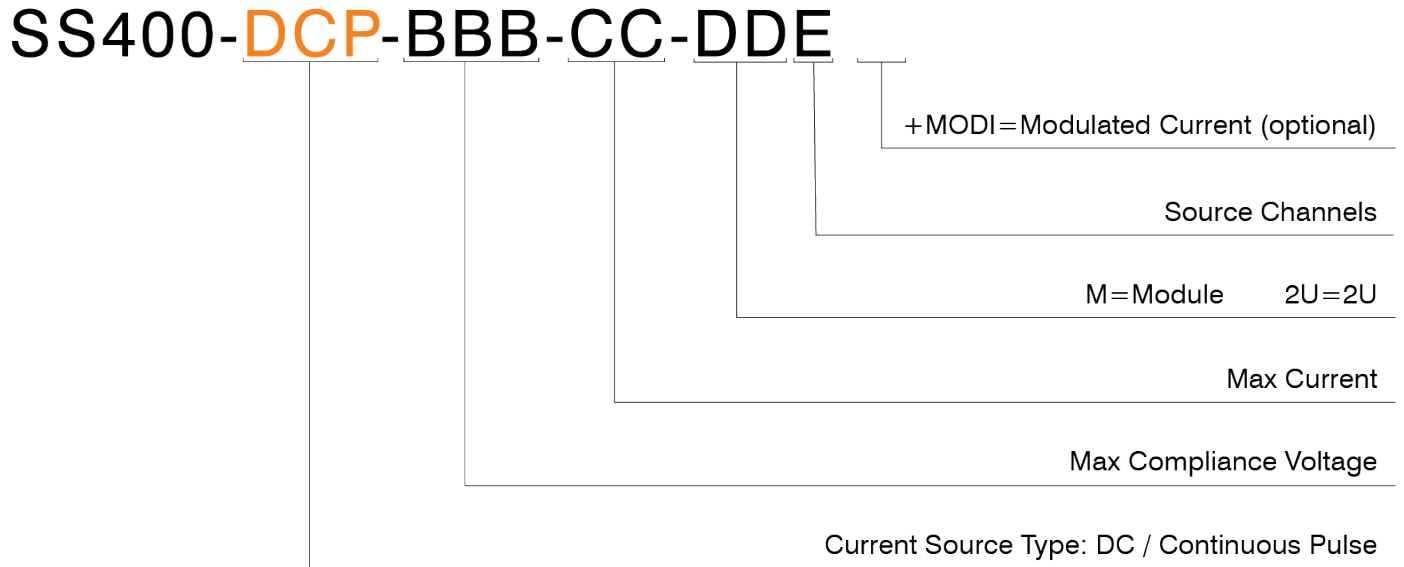
DC / Continuous Pulse Current Source Selector Guide

Max Current (A)	Max Compliance Voltage					Source Channels	Max Power (W)		Min Pulse Width
	50V	100V	200V	300V	400V		Per Channel	Total	
0.5	✓	✓	✓	✓	✓	1, 2, 4, 8	200	1600	10μs
2	✓	✓	✓	✓	✓	1, 2, 4, 8	800	6400	10μs
3	✓	✓	✓	✓	✓	1, 2, 4, 8	1000	8000	10μs
4	✓	✓	✓	✓	✓	1, 2, 4, 8	1000	8000	10μs
5	✓	✓	✓			1, 2, 4, 8	1000	8000	10μs
8	✓	✓	✓			1, 2, 4	1600	6400	10μs
10	✓	✓	✓			1, 2, 4	1600	6400	10μs
16	✓	✓	✓			1, 2	3200	6400	10μs
20	✓	✓	✓			1, 2	3200	6400	10μs
32	✓	✓	✓			1	6400	6400	10μs
40	✓	✓	✓			1	6400	6400	10μs
60	✓					1	3000	3000	10μs

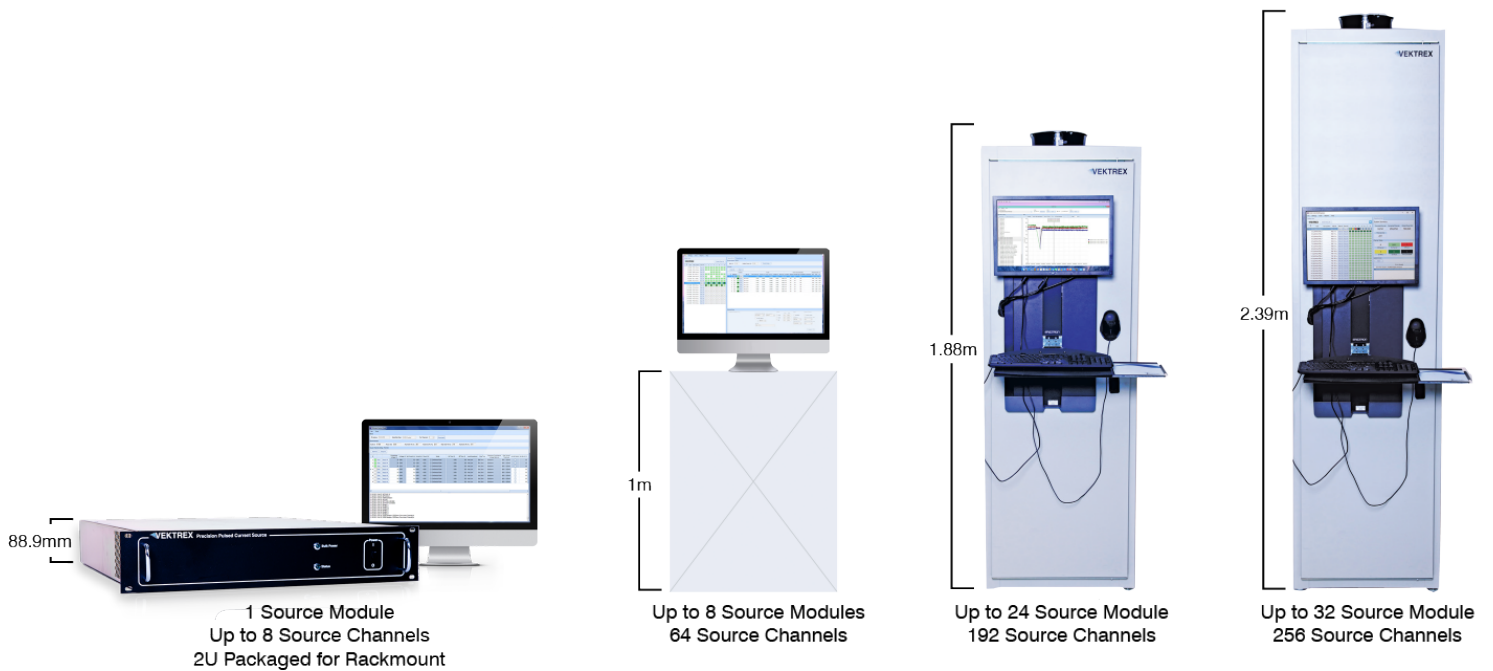
Use this table/selector guide to select your current source and determine your model number. Instructions available on the next page.

How to Select Your Current Source

On the previous page, find the columns labeled “Max Current”, “Max Compliance Voltage”, and “Source Channels” to select your current source. To determine your model number, use the model number guide below.



Vektrex System Configuration Options



If you would like assistance selecting the optimal current source for your application, please contact sales@vektrex.com.